



應用奈米科技股份有限公司
APPLIED NANO TECHNOLOGY SCIENCE, INC.

STANDARD 標準品產品總表



1. 什麼是磁流體？

磁流體是由磁性微粒，界面活性分子與基礎載液所組成。磁性微粒為奈米（nanometer, 10^{-9} 公尺）級的鐵磁分子，以界面活性分子披覆，均勻分散於基礎載液中，有如一團流動的鐵磁物質。當受到外加磁場的影響，會沿著磁力線分佈形成各種形狀。若在微小的間隙中，外加以磁場，置入磁流體，將形成一堵隔絕兩側環境屏障。

2. 磁流體如何形成軸封？

磁流體軸承的軸封部份，由磁石、導磁環與可導磁的旋轉軸形成磁力環路，將磁流體置於導磁環與旋轉軸的間隙，受磁力環路的拘束，可形成阻絕大氣進入真空腔體的環型屏障。

3. 為何磁流體軸封比橡膠軸封耐久？

磁流體軸封與傳統O型封環不同，磁流體對旋轉軸不產生摩擦。利用磁流體作為軸封材料，有如『液態O型封環』，在旋轉軸上形成阻絕大氣進入真空腔體的環型屏障，較之以傳統橡膠封環技術，具有不易磨損、無微屑污染、高速低滯等優點。正常使用下，可以數年不須保養或置換。

4. 磁流體軸封可以在高溫環境下運作嗎？

磁流體軸封內的永久磁石及磁流體無法忍受在超過其特性溫度下操作。永久磁石溫度上限在 120°C 左右，而以碳氫化合物為基礎的磁流體，安全溫度上限在 150°C 左右。除非有適當的冷卻設計，千萬不可超出溫度上限操作。必須在高溫下操作時，請考慮使用 AW 系列水冷式磁流體軸封。

5. 使用磁流體的限制

磁流體軸封的外殼以非磁性不鏽鋼材料製作，以屏蔽磁力對附近的電磁元件的影響。在使用磁流體軸封時，必需注意週圍 20 公分以內的電磁元件佈局。外在的強力磁場，也可能影響磁流體軸封之正常運作。

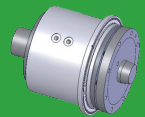
長時間靜置的磁流體軸封，在進入施加壓力差及全速運轉前，必須先行轉動數圈，讓磁流體在磁場中能均勻分佈，以延長磁流體軸封的使用壽命。

初次使用經長時間靜置的磁流體軸封，轉軸因為磁流體中磁性微粒的有序排列，磁性增強，會較平時難以轉動。在進入正常運轉前，必須先行轉動一、二圈，增加磁性微粒的亂度，以降低磁性及轉動之轉矩。訂定驅動馬達規格時，請注意其啟動轉矩要在 $4\text{ kgf}\cdot\text{cm}$ 以上。

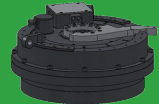
磁流體軸封因應不同環境之需求，會有不同基礎載液的磁流體。一般用於真空軸封的磁流體，不能用於流體或化學蒸氣的密封。如有特殊的環境需求，必需選用不同化學特性的磁流體。

軸封兩側的軸承，通常是高速轉動下的熱源所在。為保持磁石的永久磁性，切勿超過規格的最高轉速。較常溫為高的大氣溫度，會降低磁石在高速轉動下的耐溫程度。

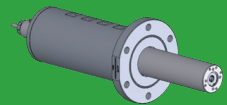
SEMICON



FPD



LED



1.What is Ferrofluid ?

Ferrofluid is composed of magnetic nanoparticles, surfactant and carrier fluid. Nanoparticles are nano-scale ferro materials. They will be coated by surfactant then to disperse homogenously in carrier fluid acting together as a magnetic liquid. When Ferrofluid is magnetized by magnetic field, Ferrofluid will be shaped according to the magnetic lines. If Ferrofluid is placed in a small vacancy and contained by magnetic field, a seal will be formed to separate ambient to the other.

2.How is Ferrofluid composed into a Magnetic Rotary Feedthrough ?

The seal of Magnetic Rotary Feedthrough is composed by Permanent Magnet, Permeable rings and shaft. The Ferrofluid is placed and confined within designed magnetic field to act as a seal in between vacuum and ambient.

3.Why is Magnetic Rotary Feedthrough durable than common O-ring seal ?

Magnetic Rotary Feedthrough is distinguished from traditional O-ring seal. Magnetic Rotary Feedthrough is running with Ferrofluid as a liquid O-ring resulting in no solid friction to shaft. The advantages are no friction, no particle contamination, low driving force at high rpm. Magnetic Rotary Feedthrough can run well for years.

4.Is Magnetic Rotary Feedthrough working well in high-temperature conditions ?

The permanent magnet and Ferrofluid in Magnetic Rotary Feedthrough is not supposed to run at temperature higher than specification. The upper limit for permanent magnet and Hydrocarbon Ferrofluid are at around 120°C and 150°C , respectively. Nevertheless, if the operating condition is over the specification, a cooling system or circuit could be implemented to protect the critical parts. The "W" series in "cooling" column of specification table are feasible to such applications.

5.Limitations to Magnetic Rotary Feedthrough applications.

The housing of Magnetic Rotary Feedthrough is made of non-magnetic material to barrier the magnetic field inside the housing to prevent any influence to neighboring electric-magnetic devices. Vice versa, neighboring massive magnetic field will possibly impact the function of Magnetic Rotary Feedthrough. A 20 cm range should be noted in caution.

A long time steady Magnetic Rotary Feedthrough should manually rotate for a while before running with bias pressure and full speed. The manual rotation could homogenize again the Ferrofluid inside.

When you unpack Magnetic Rotary Feedthrough, it might be stored for a while in your warehouse and you should manually rotate several turns to homogenize the Ferrofluid. The nanoparticles could stacked together tightly after long steady deposition, therefore, it's recommended to rotate a bit to disturb the distribution to reduce the initiating torque of the Magnetic Rotary Feedthrough. When a motor is connected to Magnetic Rotary Feedthrough, the motor rotating torque should be larger than $4\text{ kgf}\cdot\text{cm}$.

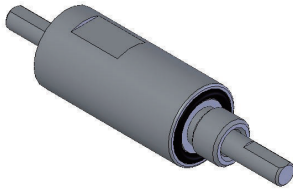
Magnetic Rotary Feedthrough is designed and fit to different operating conditions with different Ferrofluid. A Magnetic Rotary Feedthrough for common vacuum application is not suitable for liquid or chemical vapor applications. The design and material selection is defined according to different operating conditions.

Bearings in the Magnetic Rotary Feedthrough is the heat source during high speed rotation, therefore, the rotation rpm should be kept lower than specification and ambient temperature should be put into consideration to avoid over heat.

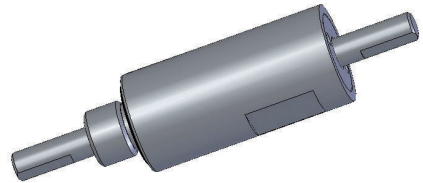
ASSCNR10

公制 Metric

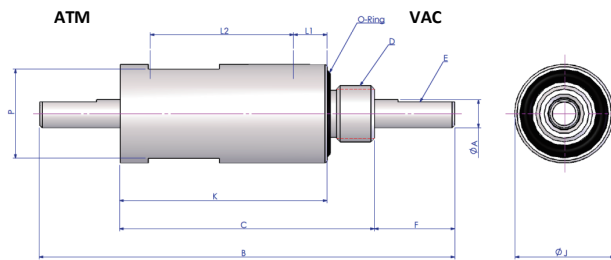
圖片一/Picture 1



圖片二/Picture 2



圖片三/Picture 3



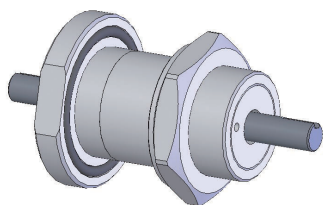
規格表格 Spec. table

軸徑	Shaft Diameter	0004	0005	0006
ØA		4 +0 / -0.018	5 +0 / -0.018	6 +0 / -0.018
B		76.5	76.5	76.5
C		46.5	46.5	46.5
D		M12*P1.5	M12*P1.5	M12*P1.5
E		0.5 深 (D) * 10 長 (L)	0.5 深 (D) * 10 長 (L)	0.5 深 (D) * 10 長 (L)
F		15	15	15
ØJ		21	21	21
K		36.5	36.5	36.5
P		19	19	19
L1 軸承位置一	Bearing Position 1	6.3	6.3	6.3
L2 軸承位置二	Bearing Position 2	25.2	25.2	25.2
O-Ring		S-14	S-14	S-14
型號	Model Number	ASS0004CNR10	ASS0005CNR10	ASS0006CNR10
真空耐度	Base Pressure	10 ⁻⁶ Pa		
氬洩量	Leak Rate	<10 ⁻¹² Pa*m3/sec		
耐壓力	Pressure Bias	2 (kg/cm2)		
使用溫度範圍	Temp. Range	0 ~ 80 (°C)		
使用氣體	Applicable Gas	非活性氣體 Inert Gas		
軸承型號	Bearing Model	686		
軸承材質	Bearing Material	SUJ2		
外殼材質	Housing Material	SUS304		
軸心材質	Shaft Material	SUS420		

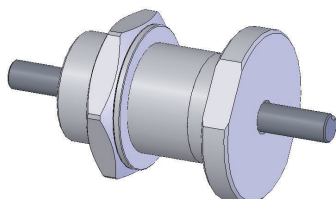
ABSCNR10

公制 Metric

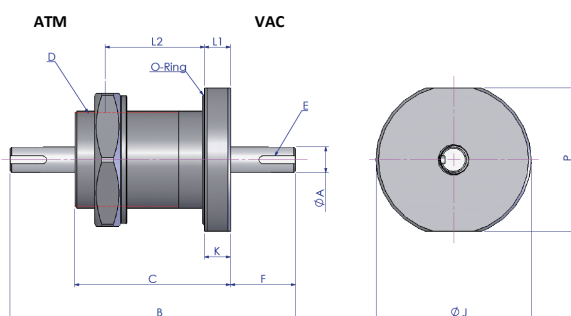
圖片一/Picture 1



圖片二/Picture 2



圖片三/Picture 3



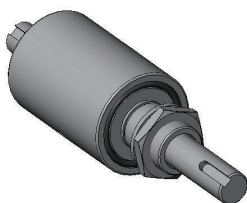
規格表格 Spec. table

軸徑	Shaft Diameter	0006	0010	0012
ØA		6 +0 / -0.018	10 +0 / -0.022	12 +0 / -0.022
B		97.5	119.5	119.5
C		57.5	69.5	69.5
D		M32 x 1.5	M38 x 1.5	M38 x 1.5
E		0.5D x 12L (Flat)	3W x 1.8D x14L (Keyway)	3W x 1.8D x14L (Keyway)
F		20	25	25
ØJ		55	60	60
K		10	10	10
P		-	55	55
L1 軸承位置一	Bearing Position 1	10.5	10	10
L2 軸承位置二	Bearing Position 2	38	49	42
O-Ring		P39	P45	P49
型號	Model Number	ABS0006CNR10	ABS0010CNR10	ABS0012CNR01
真空耐度	Base Pressure	10 ⁻⁶ Pa		
氬洩量	Leak Rate	<10 ⁻¹² Pa*m3/sec		
耐壓力	Pressure Bias	2 (kg/cm2)		
使用溫度範圍	Temp. Range	0 ~ 80 (°C)		
使用氣體	Applicable Gas	非活性氣體 Inert Gas		
軸承型號	Bearing Model	627	6001	7000
軸承材質	Bearing Material	SUJ2		
外殼材質	Housing Material	SUS304		
軸心材質	Shaft Material	SUS420		

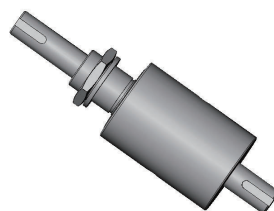
ANSCNR10

公制 Metric

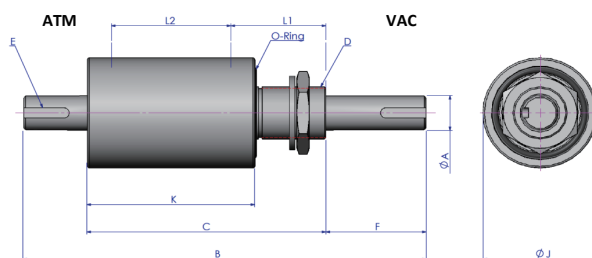
圖片一/Picture 1



圖片二/Picture 2



圖片三/Picture 3



規格表格 Spec. table

軸徑	Shaft Diameter	0012	0020
øA		12 +0 / -0.027	20 +0 / -0.033
B		179	211
C		109	121
D		M25 x 1.5	M30 x 1.5
E		4W x 2.5 DP. x20 Lg.	6W x 3.5 DP. x25 Lg.
F		40	55
øJ		48	63
K		74	82
P		-	-
L1 軸承位置一	Bearing Position 1	46	53.5
L2 軸承位置二	Bearing Position 2	52	55
O-Ring		G35	G50
型號	Model Number	ANS0012CNR10	ANS0020CNR10
真空耐度	Base Pressure	10 ⁻⁶ Pa	
氬洩量	Leak Rate	<10 ⁻¹² Pa*m3/sec	
耐壓力	Pressure Bias	2 (kg/cm2)	
使用溫度範圍	Temp. Range	0 ~ 80 (°C)	
使用氣體	Applicable Gas	非活性氣體 Inert Gas	
軸承型號	Bearing Model	6002	6005
軸承材質	Bearing Material	SUJ2	
外殼材質	Housing Material	SUS304	
軸心材質	Shaft Material	SUS420	

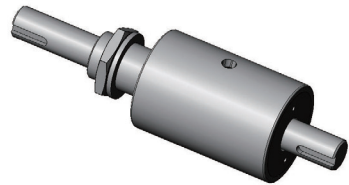
ANSWNR10

公制 Metric

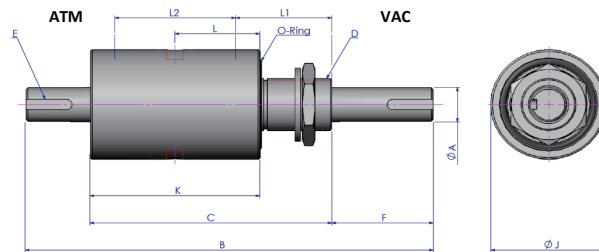
圖片一/Picture 1



圖片二/Picture 2



圖片三/Picture 3



規格表格 Spec. table

軸徑	Shaft Diameter	0012	0020
øA		12 +0 / -0.027	20 +0 / -0.033
B		179	211
C		109	121
D		M25 x 1.5	M30 x 1.5
E		4W x 2.5 DP. x20 Lg.	6W x 3.5 DP. x25 Lg.
F		40	55
øJ		48	63
K		74	82
L		36.5	40.5
L1 軸承位置一	Bearing Position 1	46	53.5
L2 軸承位置二	Bearing Position 2	52	55
O-Ring		G35	G50
型號	Model Number	ANS0012WNR10	ANS0020WNR10
真空耐度	Base Pressure	10 ⁻⁶ Pa	
氬洩量	Leak Rate	<10 ⁻¹² Pa*m3/sec	
耐壓力	Pressure Bias	2 (kg/cm2)	
使用溫度範圍	Temp. Range	0 ~ 80 (°C)	
使用氣體	Applicable Gas	非活性氣體 Inert Gas	
軸承型號	Bearing Model	6002	6005
軸承材質	Bearing Material	SUJ2	
外殼材質	Housing Material	SUS304	
軸心材質	Shaft Material	SUS420	

公制 Metric

A 3D CAD model of a shaft-hub assembly. The assembly consists of a central shaft with a keyway, a hub with a matching keyway, and a shrink disk (SD) mounted on the shaft. The SD is a cylindrical component with a flange on one end and a central bore. The hub is mounted on the shaft, and the SD is positioned between the shaft and the hub. The assembly is shown in a perspective view.

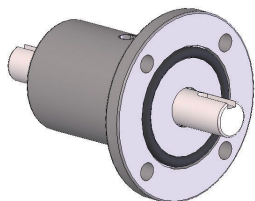
[illegible]

軸徑	Shaft Diameter	0006	0010	0010	0012	0020	0020
	øA	6 +0 / -0.018	10 +0 / -0.022	10 +0 / -0.022	12 +0 / -0.027	20 +0 / -0.033	20 +0 / -0.033
	B	97.5	132.4	119.5	133.5	162.4	151.5
	C	57.5	82.2	69.5	73.5	92.4	81.5
	øD	38	45	44	48	61	63
	E	0.5Dp. x 12Lg. (Flat)	3W x 1.8 DP. x14 Lg.	3W x 1.8 DP. x14 Lg.	4W x 2.5 DP. x20 Lg.	6W x 3.5 DP. x25 Lg.	6W x 3.5 DP. x25 Lg.
	F	20	25	25	30	35	35
	øJ	80	80	80	90	105	105
	K	10	10	10	10	10	10
	N	PD60/4-ø10	PD60/4-ø10	PD60/4-ø10	PD70/4-ø10	PD85/4-ø10	PD85/4-ø10
L1	軸承位置一 Bearing Position 1	10.5	11.7	10	11	13.5	14
L2	軸承位置二 Bearing Position 2	38	59	47	52	65.4	55
	O-Ring	G25	P38	G30	G35	P55	G50
型號	Model Number	AFS0006CNR10	AFS0010CNR01	AFS0010CNR10	AFS0012CNR10	AFS0020CNR00	AFS0020CNR10
真空耐度	Base Pressure	10 ⁻⁶ Pa					
氦洩量	Leak Rate	<10 ⁻¹² Pa*m3/sec					
耐壓力	Pressure Bias	2 (kg/cm2)					
使用溫度範圍	Temp. Range	0 ~ 80 (°C)					
使用氣體	Applicable Gas	非活性氣體 Inert Gas					
軸承型號	Bearing Model	627	6300	6001	6002	6304	6005
軸承材質	Bearing Material	SUJ2					
外殼材質	Housing Material	SUS304					
軸心材質	Shaft Material	SUS420					

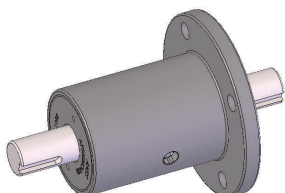
AFSWNR10

公制 Metric

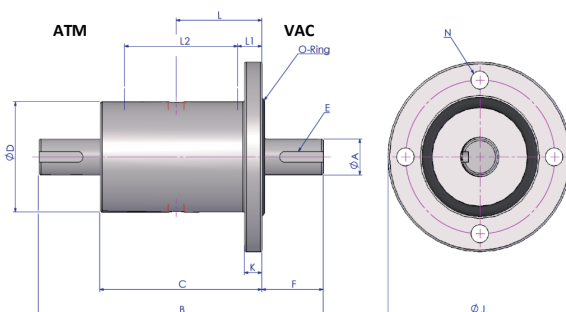
圖片一/Picture 1



圖片二/Picture 2



圖片三/Picture 3



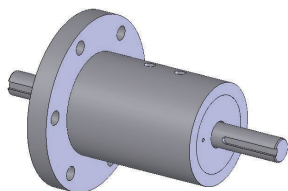
規格表格 Spec. table

軸 徑	Shaft Diameter	0006	0010	0012	0020
øA		6 +0 / -0.018	10 +0 / -0.022	12 +0 / -0.027	20 +0 / -0.033
B		97.5	119.5	133.5	151.5
C		57.5	69.5	73.5	81.5
D		38	44	48	68
E		0.5D x 12L (Flat)	3W x 1.8D x 14L	4W x 2.5D x 20L	6W x 3.5D x 25L
F		20	25	30	35
øJ		80	80	90	105
K		10	10	10	10
N		PD60/4-ø10	PD60/4-ø10	PD70/4-ø10	PD85/4-ø10
L		18	24	27	31
L1 軸承位置一	Bearing Position 1	10.5	10	11	14
L2 軸承位置二	Bearing Position 2	38	47	52	55
O-Ring		G25	G30	G35	G50
型號	Model Number	AFS0006WNR10	AFS0010WNR10	AFS0012WNR10	AFS0020WNR10
真空耐受	Base Pressure	10 ⁻⁶ Pa			
氬洩量	Leak Rate	<10 ⁻¹² Pa*m3/sec			
耐壓力	Pressure Bias	2 (kg/cm2)			
使用溫度範圍	Temp. Range	0 ~ 80 (°C)			
使用氣體	Applicable Gas	非活性氣體 Inert Gas			
軸承型號	Bearing Model	627	6001	6002	6005
軸承材質	Bearing Material	SUJ2			
外殼材質	Housing Material	SUS304			
軸心材質	Shaft Material	SUS420			

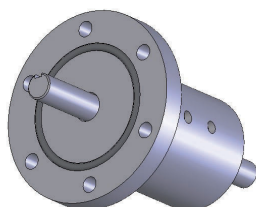
AFSWKR10

公制 Metric

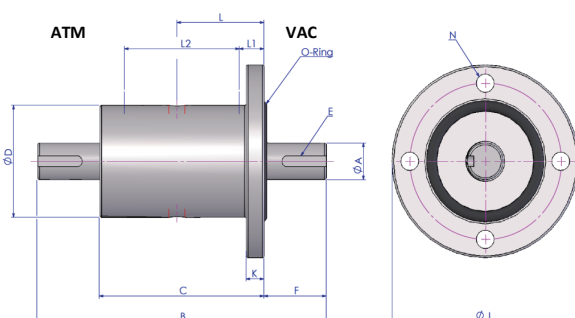
圖片一/Picture 1



圖片二/Picture 2



圖片三/Picture 3

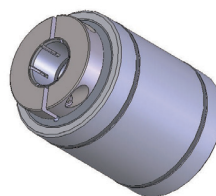


規格表格 Spec. table

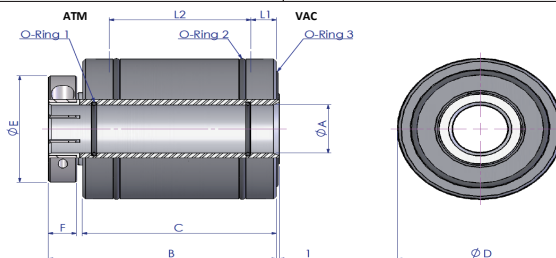
軸徑	Shaft Diameter	0020	0025	0030	0040	0050
øA		20 +0 / -0.033	25 +0 / -0.033	30 +0 / -0.033	40 +0 / -0.039	50 +0 / -0.039
B		255	288	321	357.5	406.5
C		135	138	141	157	166
D		85	95	105	125	140
E		6Wx3.5 DP.x50 Lg.	7Wx4 DP.x63 Lg.	10Wx5DP.x80 Lg.	12Wx5 DP.x90 Lg.	14Wx5.5DP.x110Lg.
F		60	75	90	100	120
øJ		145	160	160	185	210
K		18	18	20	22	24
L		48	50	50	55.5	59.5
M		29	29	29	33	33
N		PD120/6-ø12	PD135/6-ø12	PD135/6-ø12	PD160/8-ø12	PD185/8-ø12
L1 軸承位置一	Bearing Position 1	38	27	28	32	34
L2 軸承位置二	Bearing Position 2	95	96.5	98.5	110.5	113
O-Ring		P90	P100	P105	P125	P150
型號	Model Number	AFS0020WKR10	AFS0025WKR10	AFS0030WKR10	AFS0040WKR10	AFS0050WKR10
真空耐受	Base Pressure	10 ⁻⁶ Pa				
氬洩量	Leak Rate	<10 ⁻¹² Pa*m3/sec				
耐壓力	Pressure Bias	2 (kg/cm2)				
使用溫度範圍	Temp. Range	0 ~ 80 (°C)				
使用氣體	Applicable Gas	非活性氣體 Inert Gas				
軸承型號	Bearing Model	VAC 7206CDF	VAC 7207CDF	VAC 7208CDF	VAC 7210CDF	VAC 7212CDF
		ATM 6205	ATM 6206	ATM 6207	ATM 6009	ATM 6211
軸承材質	Bearing Material	SUJ2				
外殼材質	Housing Material	SUS304				
軸心材質	Shaft Material	SUS420				

公制 Metric

圖片二/Picture 2



圖片三/Picture 3

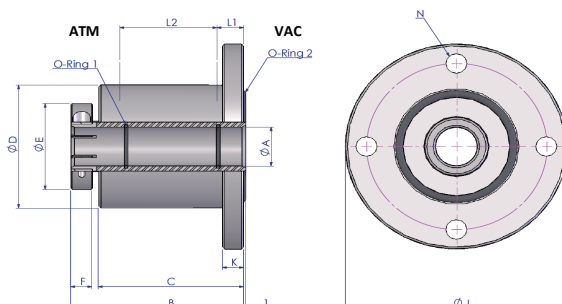
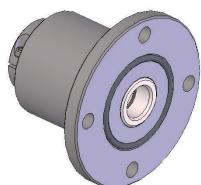


規格表格 Spec. table

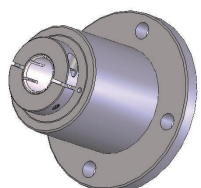
軸徑	Shaft Diameter	0010	0020	0025	0030	0040	0050	0075
	øA	10 +0.03 / +0.01	20 +0.04 / +0.02	25 +0.04 / +0.02	30 +0.04 / +0.02	40 +0.05 / +0.02	50 +0.05 / +0.02	75 +0.06 / +0.03
	B	78	82.5	88	93	96	98	115
	C	64	68.5	74	79	80	82	96
	D	48 +0 / -0.02	58 +0 / -0.03	63 +0 / -0.03	73 +0 / -0.03	88 +0 / -0.04	98 +0 / -0.04	137 +0 / -0.04
	øE	34	44	49	54	69	79	109
	F	10	10	10	10	12	12	15
	øG	10-0.01/-0.03	20-0.01/-0.03	25-0.01/-0.03	30-0.01/-0.03	40-0.01/-0.03	50-0.01/-0.03	75-0.01/-0.03
	øH	48+0.05/+0.03	58+0/-0.03	63+0.06/+0.03	73+0.06/+0.03	88+0.07/+0.04	98+0.07/+0.04	137+0.07/+0.04
L1	軸承位置一 Bearing Position 1	8.5	9.5	11.5	11.5	11.5	12	15.5
L2	軸承位置二 Bearing Position 2	46	48	50	54	55	56	62
	O-Ring1	S10	S20	S25	S30	S40	S50	S75
	O-Ring2	S38	S48	S53	S60	S75	S85	S125
	O-Ring3	S45	S55	S60	S70	S85	S95	S132
型號	Model Number	ACM0010CNR10	ACM0020CNR10	ACM0025CNR10	ACM0010CNR10	ACM0030CNR10	ACM0040CNR10	ACM0050CNR10
真空耐力	Base Pressure	10 ⁻⁶ Pa						
氬洩量	Leak Rate	<10 ⁻¹² Pa*m3/sec						
耐壓力	Pressure Bias	2 (kg/cm2)						
使用溫度範圍	Temp. Range	0 ~ 80 (°C)						
使用氣體	Applicable Gas	非活性氣體 Inert Gas						
軸承型號	Bearing Model	16003	6906	6907	6910	6912	6918	
軸承材質	Bearing Material	SUJ2						
外殼材質	Housing Material	SUS304						
軸心材質	Shaft Material	SUS420						

公制 Metric

圖片三/Picture 3



圖片二/Picture 2

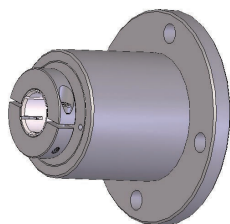


軸徑	Shaft Diameter	0010	0020	0025	0030	0040	0050	0075
øA		10 +0.03 / +0.01	20 +0.04 / +0.02	25 +0.04 / +0.02	30 +0.04 / +0.02	40 +0.05 / +0.02	50 +0.05 / +0.02	75 +0.06 / +0.03
B		78	82.5	88	93	96	98	115
C		64	68.5	74	79	80	82	96
øD		51	63	71	78	90	103	143
øE		34	44	49	54	69	79	109
F		10	10	10	10	12	12	15
øG		10-0.01/-0.03	20-0.01/-0.03	25-0.01/-0.03	30-0.01/-0.03	40-0.01/-0.03	50-0.01/-0.03	75-0.01/-0.03
øJ		90	105	120	120	145	160	210
K		10	10	10	10	10	12	12
N		PD70/4-ø10	PD85/4-ø10	PD100/4-ø10	PD100/4-ø10	PD120/4-ø12	PD135/4-ø12	PD185/8-ø12
L1 軸承位置一 Bearing Position 1		8.5	9.5	11.5	11.5	11.5	12	15.5
L2 軸承位置二 Bearing Position 2		46	48	50	54	55	56	62
O-Ring1		S10	S20	S25	S30	S40	S50	S75
O-Ring2		S40	S50	S60	S70	S80	S90	S130
型號	Model Number	AFM0010CNR10	AFM0020CNR10	AFM0025CNR10	AFM0030CNR10	AFM0040CNR10	AFM0050CNR10	AFM0075CNR10
真空耐度	Base Pressure	10 ⁻⁶ Pa						
氬洩量	Leak Rate	<10 ⁻¹² Pa*m3/sec						
耐壓力	Pressure Bias	2 (kg/cm2)						
使用溫度範圍	Temp. Range	0 ~ 80 (°C)						
使用氣體	Applicable Gas	非活性氣體 Inert Gas						
軸承型號	Bearing Model	16003	6906	6907	6908	6910	6912	6918
軸承材質	Bearing Material	SUJ2						
外殼材質	Housing Material	SUS304						
軸心材質	Shaft Material	SUS420						

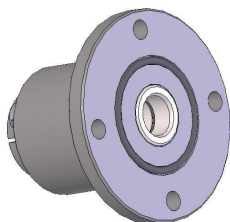
AFMCMR10

公制 Metric

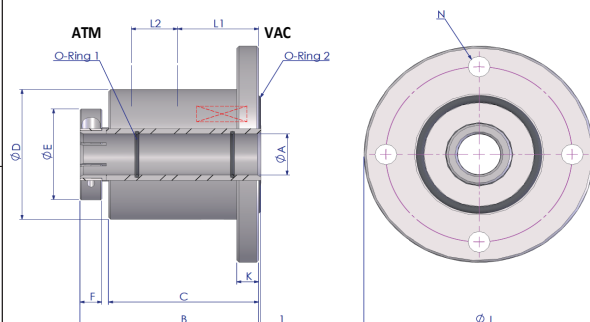
圖片一/Picture 1



圖片二/Picture 2



圖片三/Picture 3



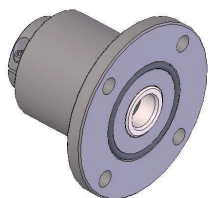
規格表格 Spec. table

軸徑	Shaft Diameter	0020	0025	0030	0040	0050
ØA		20+0.04/+0.02	25+0.04/+0.02	30+0.04/+0.02	40+0.05/+0.02	50+0.05/+0.02
B		123.5	126	130.5	141	147.5
C		109.5	112	116.5	125	131.5
ØD		78	90	96	106	132
ØE		44	49	54	69	79
F		10	10	10	12	12
ØG		20 -0.01 / -0.03	25 -0.01 / -0.03	30 -0.01 / -0.03	40 -0.01 / -0.03	50 -0.01 / -0.03
J		120	145	145	160	185
K		10	10	10	12	12
N		PD100/4-Ø10	PD120/4-Ø12	PD120/4-Ø12	PD135/4-Ø12	PD160/8-Ø12
L1 軸承位置一	Bearing Position 1	50	52.5	54	57.5	60
L2 軸承位置二	Bearing Position 2	39	39.5	39	41	48
O-Ring1		S20	S25	S30	S40	S50
O-Ring2		G50	G60	G70	G80	G90
型號	Model Number	AFM0020CMR10	AFM0025CMR10	AFM0030CMR10	AFM0040CMR10	AFM0050CMR10
真空耐度	Base Pressure	10 ⁻⁶ Pa				
氬洩量	Leak Rate	<10 ⁻¹² Pa*m3/sec				
耐壓力	Pressure Bias	2 (kg/cm2)				
使用溫度範圍	Temp. Range	0 ~ 80 (°C)				
使用氣體	Applicable Gas	非活性氣體 Inert Gas				
軸承型號	Bearing Model	7206CDB	7207CDB	7208CDB	7210CDB	7212CDB
軸承材質	Bearing Material	SUJ2				
外殼材質	Housing Material	SUS304				
軸心材質	Shaft Material	SUS420				

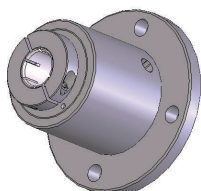
AFMWMR10

公制 Metric

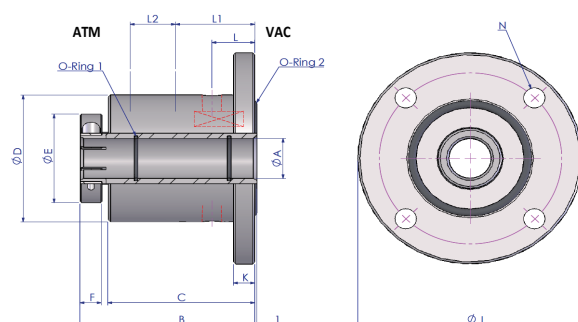
圖片一/Picture 1



圖片二/Picture 2



圖片三/Picture 3



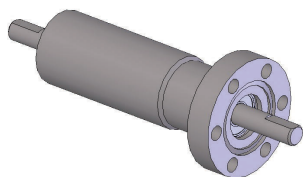
規格表格 Spec. table

軸徑	Shaft Diameter	0020	0025	0030	0040	0050
ØA		20+0.04/+0.02	25+0.04/+0.02	30+0.04/+0.02	40+0.05/+0.02	50+0.05/+0.02
B		123.5	126	130.5	141	147.5
C		109.5	112	116.5	125	131.5
ØD		78	90	96	106	132
ØE		44	49	54	69	79
F		10	10	10	12	12
ØG		20 -0.01 / -0.03	25 -0.01 / -0.03	30 -0.01 / -0.03	40 -0.01 / -0.03	50 -0.01 / -0.03
J		120	145	145	160	185
K		10	10	10	12	12
L		14.5	13	14	12	12.5
N		PD100/4-Ø10	PD120/4-Ø12	PD120/4-Ø12	PD135/4-Ø12	PD160/8-Ø12
L1	軸承位置一 Bearing Position 1	50	52.5	54	57.5	60
L2	軸承位置二 Bearing Position 2	39	39.5	39	41	48
	O-Ring1	S20	S25	S30	S40	S50
	O-Ring2	G50	G60	G70	G80	G90
型號	Model Number	AFM0020WMR10	AFM0025WMR10	AFM0030WMR10	AFM0040WMR10	AFM0050WMR10
真空耐受	Base Pressure	10 ⁻⁶ Pa				
氬洩量	Leak Rate	<10 ⁻¹² Pa*m3/sec				
耐壓力	Pressure Bias	2.5 (kg/cm2)				
使用溫度範圍	Temp. Range	0 ~ 80 (°C)				
使用氣體	Applicable Gas	非活性 / 活性氣體 Inert Gas / Active Gas				
軸承型號	Bearing Model	7206CDB	7207CDB	7208CDB	7210CDB	7212CDB
軸承材質	Bearing Material	SUJ2				
外殼材質	Housing Material	SUS304				
軸心材質	Shaft Material	SUS420				

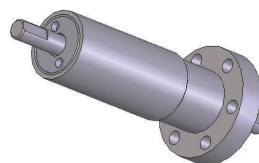
AGSCNR01

公制 Metric

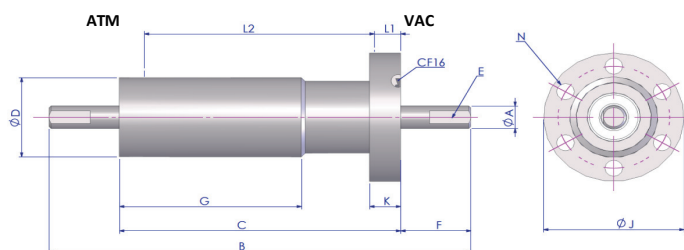
圖片一/Picture 1



圖片二/Picture 2



圖片三/Picture 3



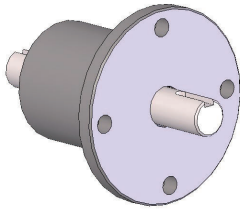
規格表格 Spec. table

軸徑	Shaft Diameter	0006
øA		6 +0 / -0.018
B		102
C		68
D		21
E		0.54D x 10L (Flat)
F		17
G		44
øJ		34
K		7.5
N		6-ø4.3 on BCDø27
L1	軸承位置一 Bearing Position 1	6.4
L2	軸承位置二 Bearing Position 2	55.6
型號	Model Number	AGS0006CNR01
真空耐度	Base Pressure	10 ⁻⁶ Pa
氬洩量	Leak Rate	<10 ⁻¹² Pa*m3/sec
耐壓力	Pressure Bias	2 (kg/cm2)
使用溫度範圍	Temp. Range	0 ~ 80 (°C)
使用氣體	Applicable Gas	非活性氣體 Inert Gas
VCA軸承型號	VCA Bearing Model	686
ATM軸承型號	ATM Bearing Model	R4
軸承材質	Bearing Material	SUJ2
外殼材質	Housing Material	SUS304
軸心材質	Shaft Material	SUS420

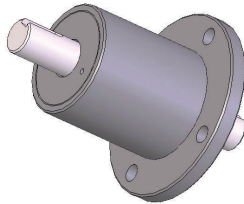
AHSCNR01

公制 Metric

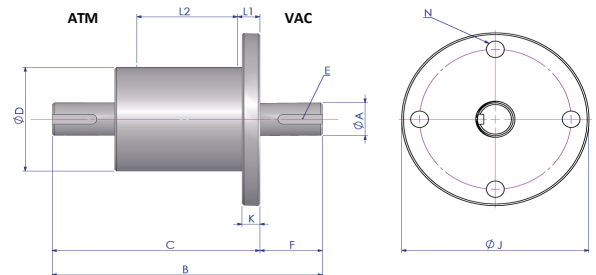
圖片一/Picture 1



圖片二/Picture 2



圖片三/Picture 3



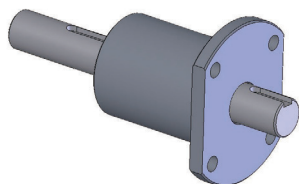
規格表格 Spec. table

軸徑	Shaft Diameter	0020
øA		20 +0 / -0.033
B		151.5
C		116.5
øD		63
E		6W x 3.5 DP. x25 Lg.
F		35
øJ		105
K		10
N		PD85/4-ø10
L1	軸承位置一 Bearing Position 1	12.5
L2	軸承位置二 Bearing Position 2	56.5
型號	Model Number	AHS0020CNR01
真空耐度	Base Pressure	10 ⁻⁶ Pa
氬洩量	Leak Rate	<10 ⁻¹² Pa*m3/sec
耐壓力	Pressure Bias	2 (kg/cm2)
使用溫度範圍	Temp. Range	0 ~ 80 (°C)
使用氣體	Applicable Gas	非活性氣體 Inert Gas
軸承型號	Bearing Model	6304
軸承材質	Bearing Material	SUJ2
外殼材質	Housing Material	SUS420
軸心材質	Shaft Material	SUS420

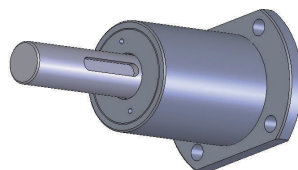
AHS0025CNR01

公制 Metric

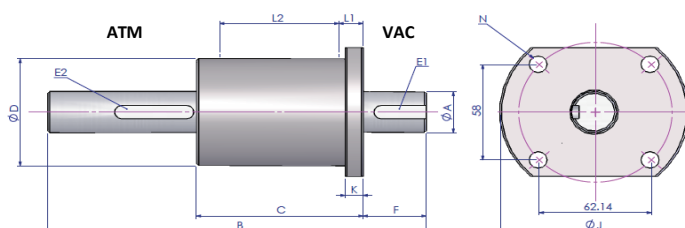
圖片一/Picture 1



圖片二/Picture 2



圖片三/Picture 3



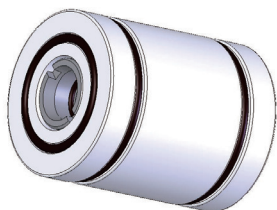
規格表格 Spec. table

軸徑	Shaft Diameter	0025
øA		25 +0 / -0.033
B		210
C		92.4
øD		65
E1		8W x 4 DP. x29 Lg.
E2		8W x 4 DP. x44 Lg.
F		35
øJ		105
K		10
N		4-ø10
L1 軸承位置一	Bearing Position 1	13.4
L2 軸承位置二	Bearing Position 2	66
型號	Model Number	AHS0025CNR01
真空耐度	Base Pressure	10^{-6} Pa
氬洩量	Leak Rate	$<10^{-12}$ Pa*m3/sec
耐壓力	Pressure Bias	2 (kg/cm2)
使用溫度範圍	Temp. Range	0 ~ 80 (°C)
使用氣體	Applicable Gas	非活性氣體 Inert Gas
軸承型號	Bearing Model	6205
軸承材質	Bearing Material	SUJ2
外殼材質	Housing Material	SUS420
軸心材質	Shaft Material	SUS420

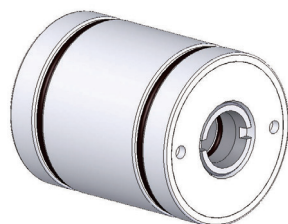
ACHCNR00

公制 Metric

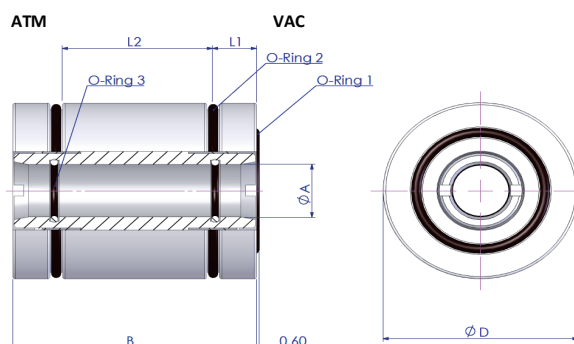
圖片一/Picture 1



圖片二/Picture 2



圖片三/Picture 3



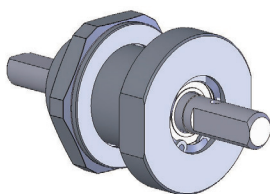
規格表格 Spec. table

軸徑	Shaft Diameter	0012
øA		12 +0.04 / +0.02
B		50
D		40 +0 / -0.02
øG		12 -0.01 / -0.03
øH		40 +0.05 / +0.03
L1	軸承位置一 Bearing Position 1	9
L2	軸承位置二 Bearing Position 2	30
	O-Ring 1	S25
	O-Ring 2	S36
	O-Ring 3	S12
型號	Model Number	ACH0012CNR00
真空耐度	Base Pressure	10 ⁻⁶ Pa
氬洩量	Leak Rate	<10 ⁻¹² Pa*m3/sec
耐壓力	Pressure Bias	2 (kg/cm2)
使用溫度範圍	Temp. Range	0 ~ 80 (°C)
使用氣體	Applicable Gas	非活性氣體 Inert Gas
VCA軸承型號	VCA Bearing Model	6003
ATM軸承型號	ATM Bearing Model	16003
軸承材質	Bearing Material	SUJ2
外殼材質	Housing Material	SUS420
軸心材質	Shaft Material	SUS420

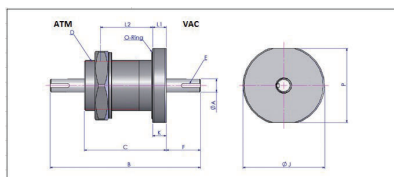
BBSCNR01

英制 Imperial

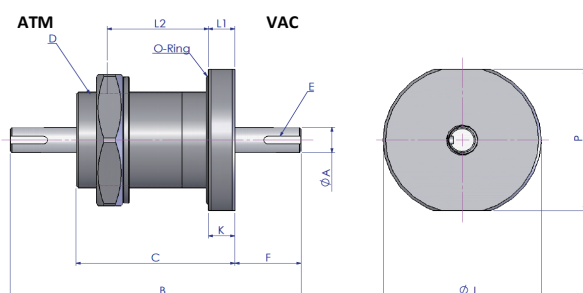
圖片一/Picture 1



圖片二/Picture 2



圖片三/Picture 3



規格表格 Spec. table

軸徑	Shaft Diameter	0375
ØA		9.525 +0 / -0.022
B		86.5
C		42
D		1"-14
E		3W x 1.8 DP. x14 Lg. (Keyway)
F		22.5
ØJ		41
K		9
P		38
L1 軸承位置一	Bearing Position 1	5.5
L2 軸承位置二	Bearing Position 2	31
O-Ring		2030
型號	Model Number	BBS0375CNR01
真空耐度	Base Pressure	10 ⁻⁶ Pa
氬洩量	Leak Rate	<10 ⁻¹² Pa*m3/sec
耐壓力	Pressure Bias	2 (kg/cm2)
使用溫度範圍	Temp. Range	0 ~ 80 (°C)
使用氣體	Applicable Gas	非活性氣體 Inert Gas
軸承型號	Bearing Model	6800
軸承材質	Bearing Material	SUJ2
外殼材質	Housing Material	SUS304
軸心材質	Shaft Material	SUS420

